

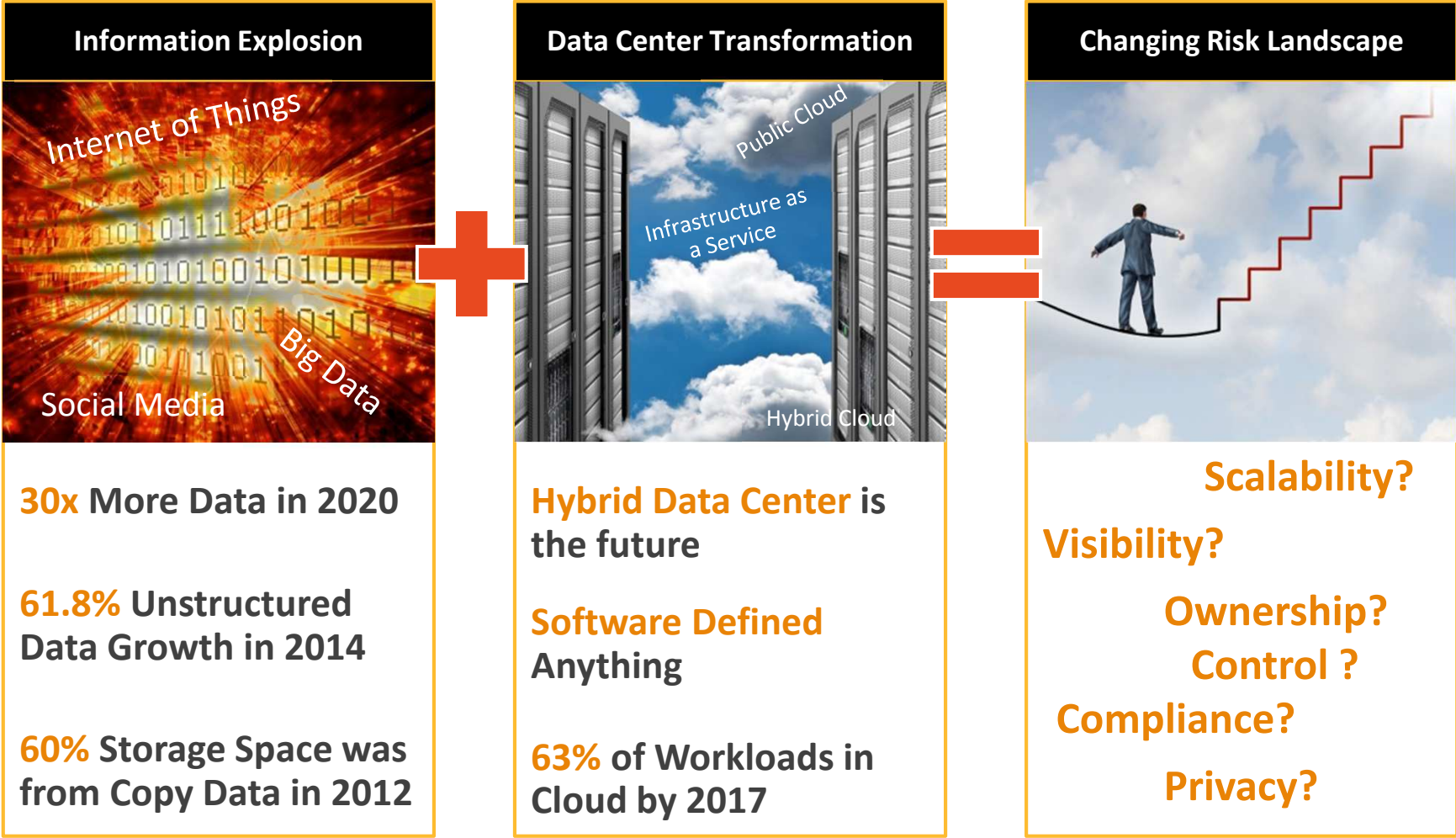


What's new in NetBackup 7.6?

Roberto Dellavedova

Product Specialist Information Management

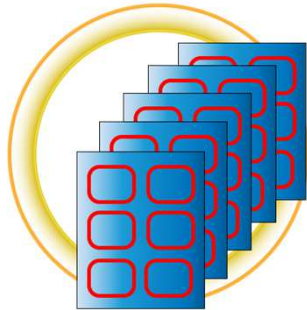
Key Trends: Pain Points in Data Protection



NetBackup 7.6

Better Backup for a Virtual World

Better Backup for Virtual Machine Sprawl



- Extreme Performance
- Elastic Automation
- Integrated Management

Better Backup for the Software Defined Data Center



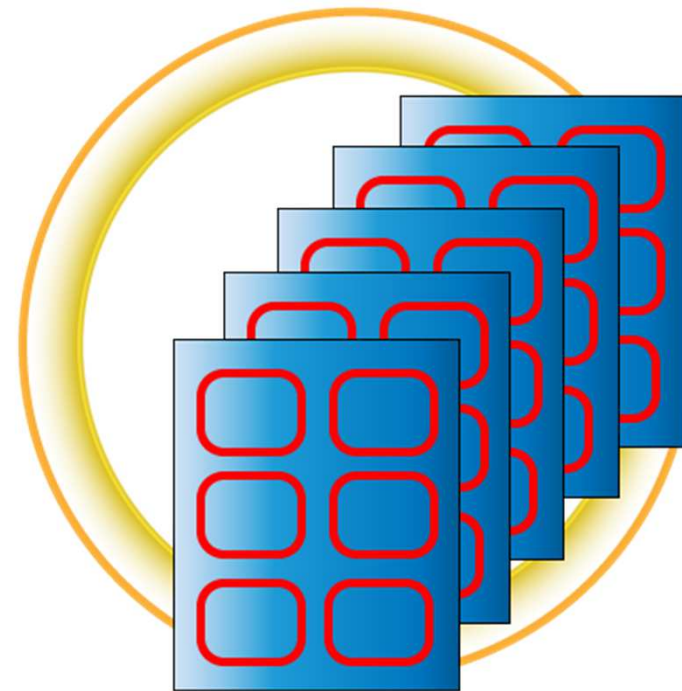
- Protect the DNA
- Data Center Portability
- IT as Information Broker

Better Backup as a Service

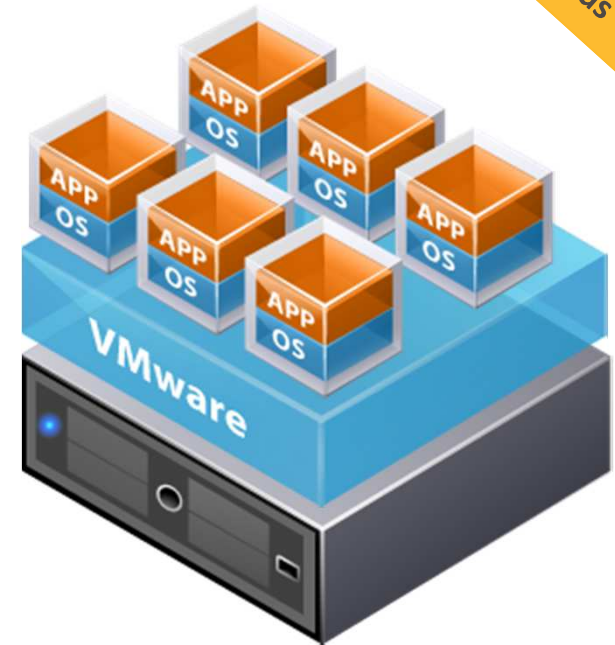
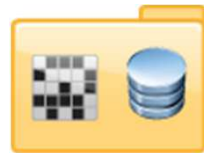


- Integrated Platform
- Backup as a Service
- DR as a Service

BETTER BACKUP FOR VIRTUAL MACHINE SPRAWL



Ability to meet backup windows Accelerator for VMware



WHAT IT DOES:

- Leverages VMware CBT (Changed block tracking)
- Backs up only changed data, then deduplicates that data
- Takes the changes and synthetically recreates a full back image

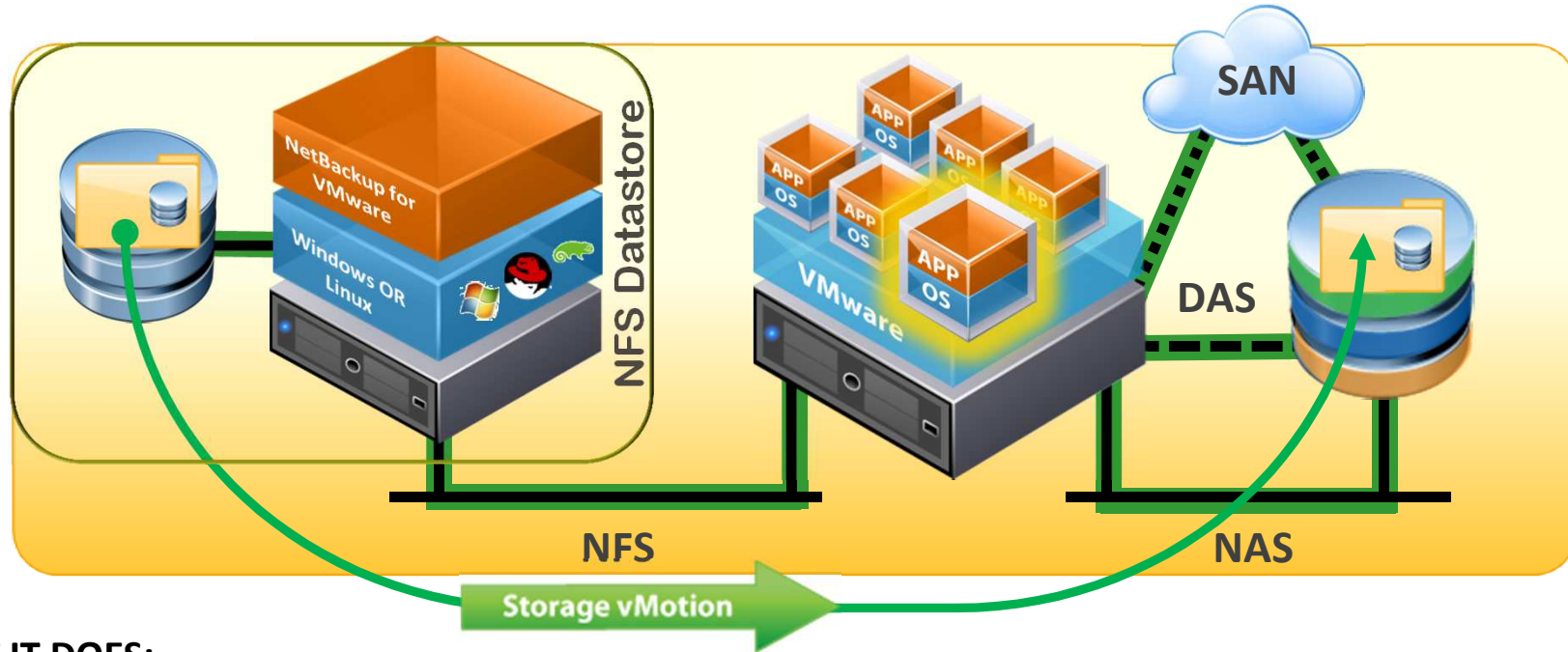
THE BENEFIT:

- Less processing overhead required to read just changed blocks of data
- Backing up less equals faster backup
- Full backup recoverability, impact of an incremental backup

35X FASTER BACKUPS

Ability to meet recovery SLAs Instant Recovery and Storage vMotion

Optimize for
Source Workloads



WHAT IT DOES:

- Powers on the virtual machine from backup storage
- Makes the VM visible in vCenter as soon as it's powered on
- Leverages vMotion to move the VM back to production storage

THE BENEFIT:

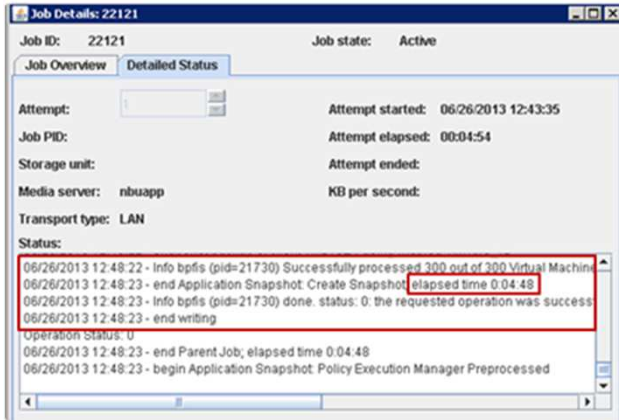
- No more waiting for the restore to occur before access to the VM can be realized
- VM Admin can see and manage the VM just as before
- vMotion moves the VM without disrupting access

400X **FASTER RECOVERY**

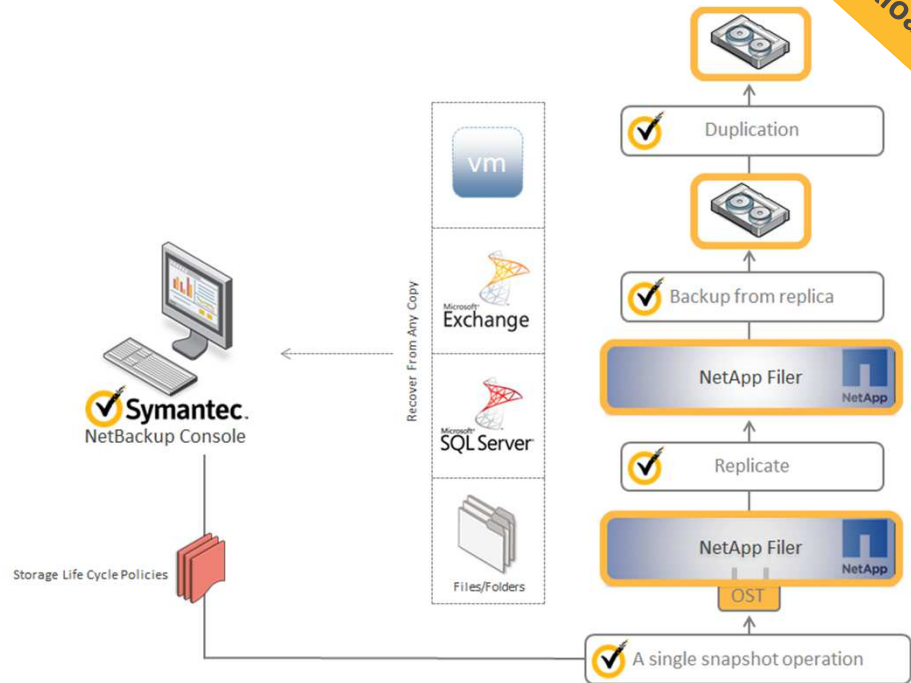
Ability to meet backup windows and recovery SLAs

Replication Director for VMware

Optimize for Source Workloads



300 VMs in 300 seconds



WHAT IT DOES:

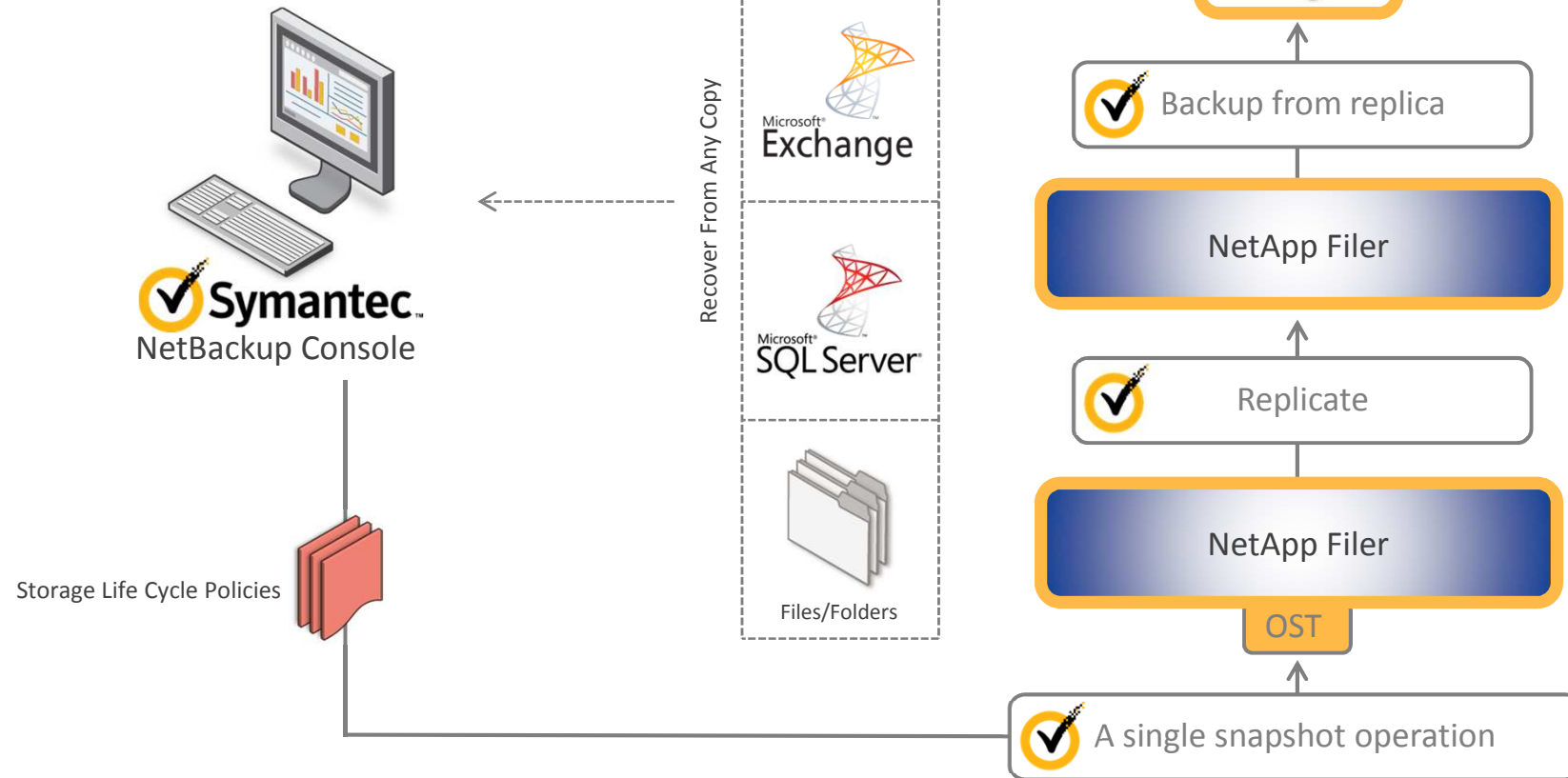
- Manages 3rd party array-based snapshots and replication from within NetBackup
- Catalogs snapshot images to provide granular restore capabilities for files, folders, and applications on VMware

THE BENEFIT:

- Speed of snapshots, recoverability of NetBackup
- Very low impact on ESXi resources since snapshots happening at storage layer
- One solution to manage every snapshot and replication operation

Replication Director for VMware

SQL, Exchange, File Systems



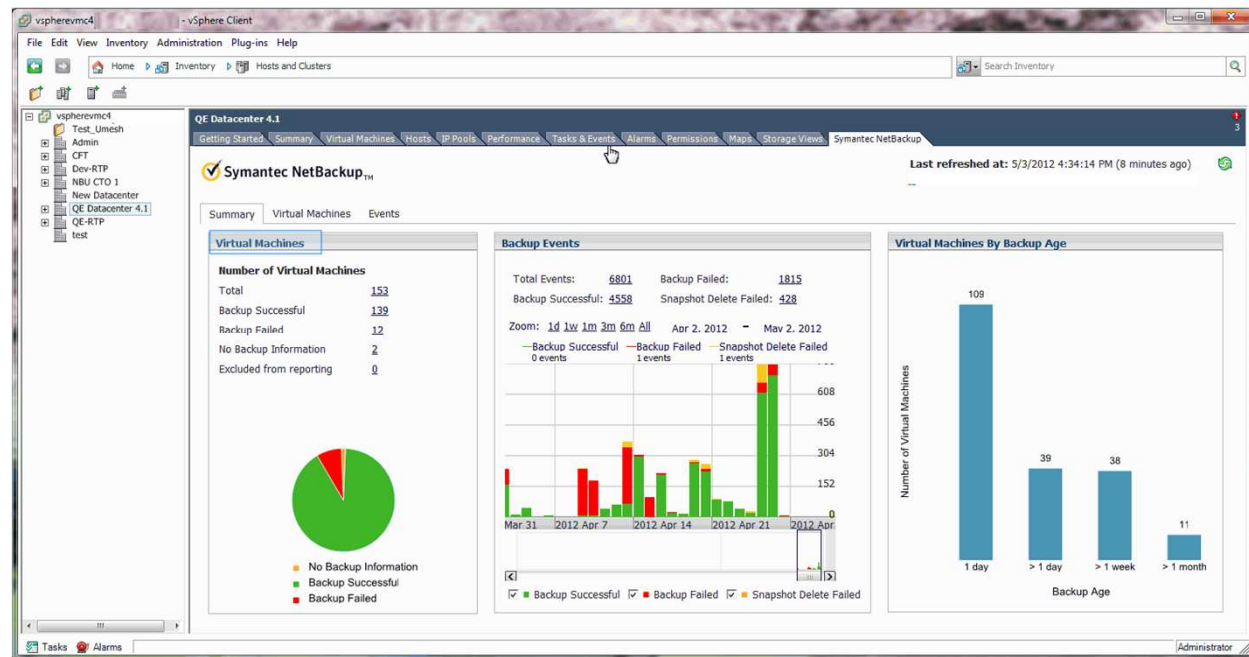
Simplified Backup Monitoring and recovery of VMs NetBackup plug-in for vCenter

WHAT IT DOES:

- The vCenter plugin provides a management interface available to VM Admins

THE BENEFIT:

- Allows self-service restore
- Provides backup reporting
 - Most recent backup
 - Backup timeline
 - Success/failure

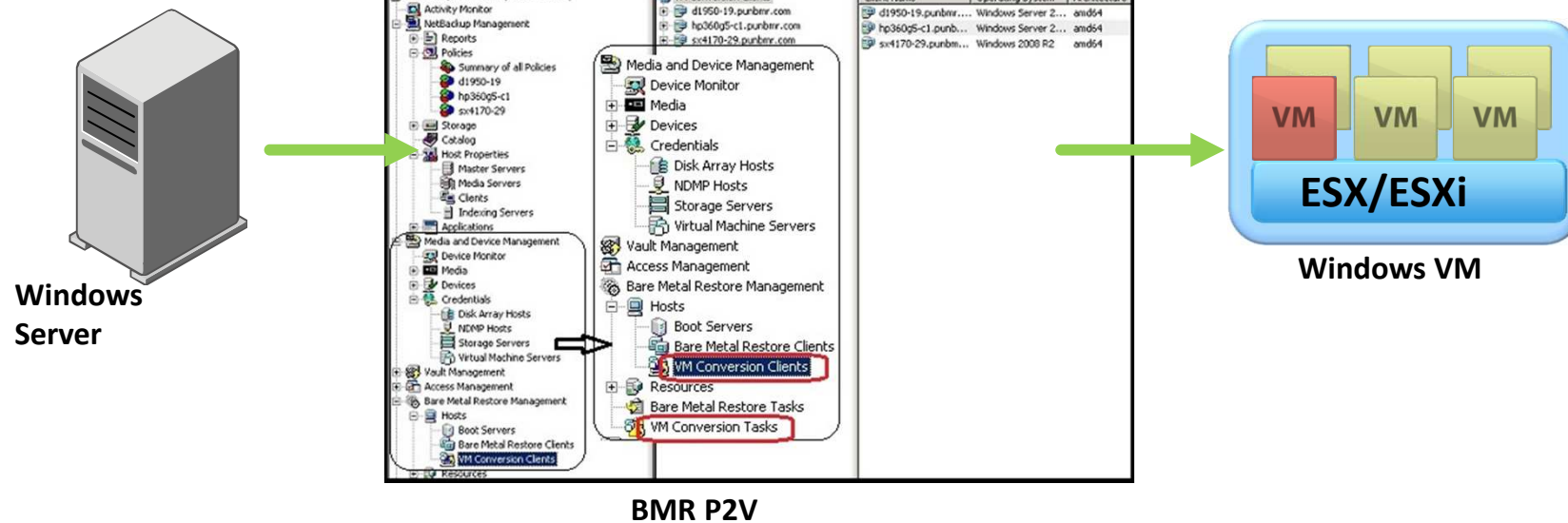


Simplified Server Recovery

Physical to virtual recovery with Bare Metal Restore

Optimize for Source Workloads

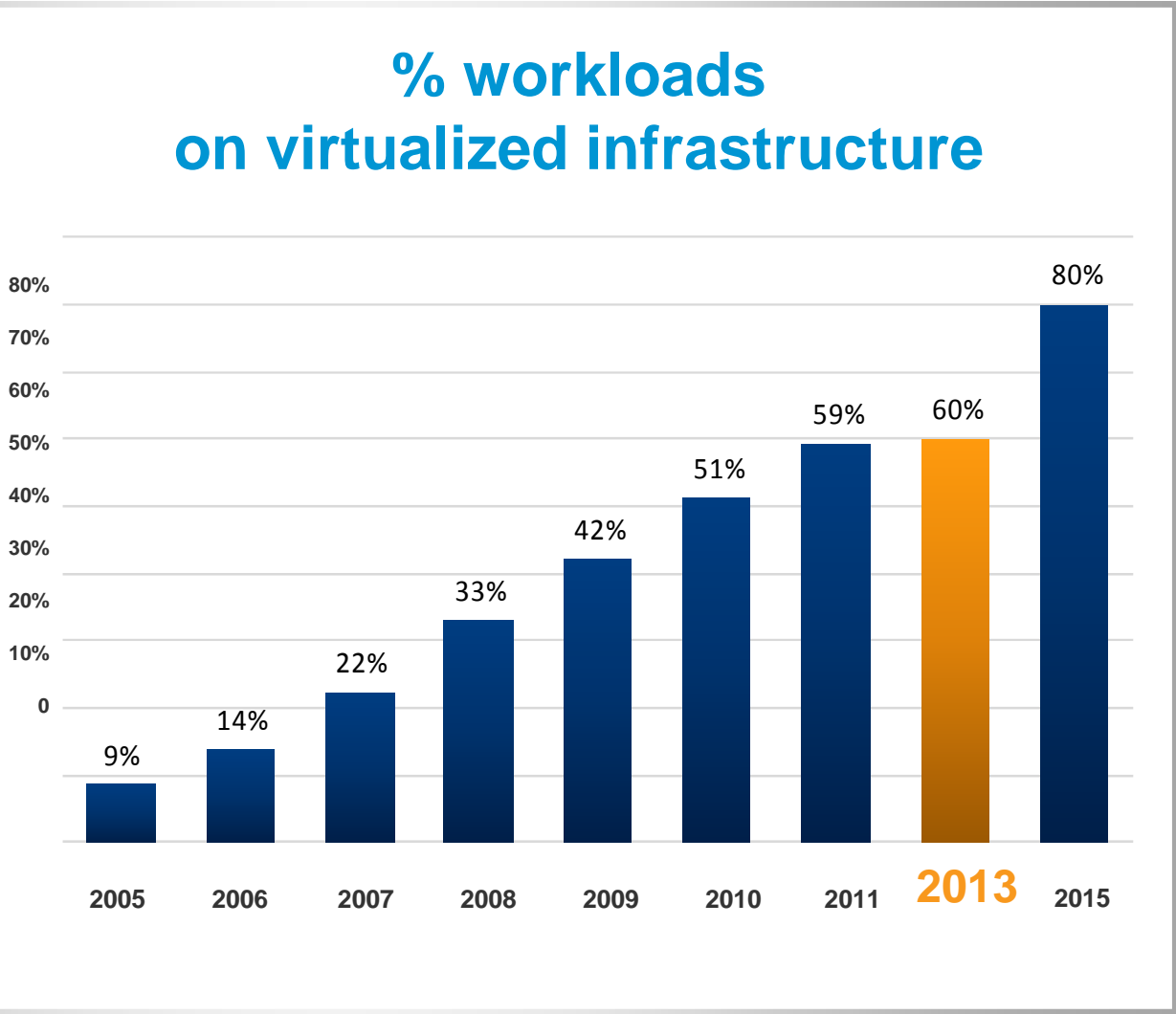
- Windows P2V integrated in the BMR console
- Combines BMR Windows backup + VM Recovery Wizard
- Eliminates VM network boot for P2V recovery



BETTER BACKUP FOR THE SOFTWARE- DEFINED DATA CENTER



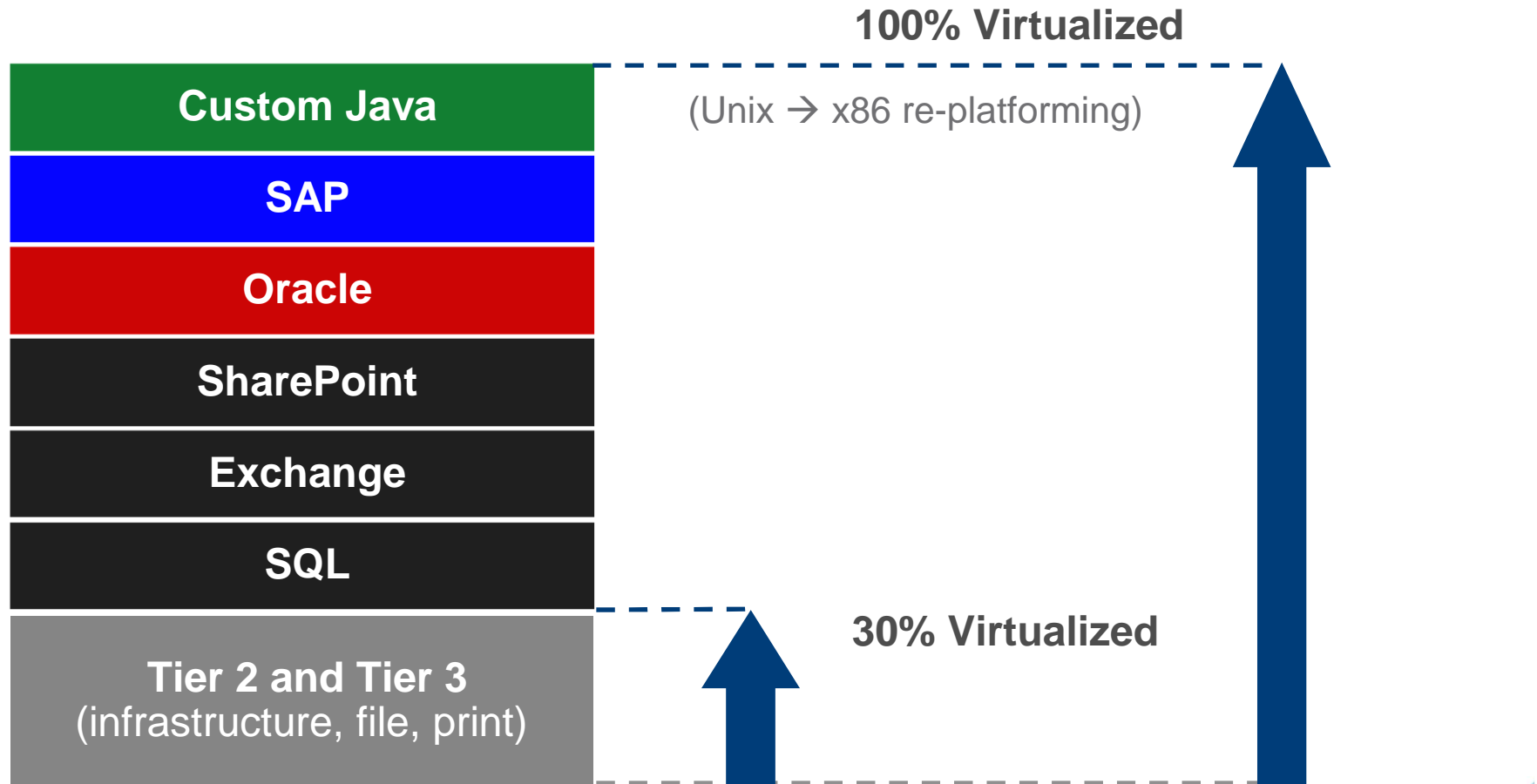
Virtual Reality



Source: Gartner "Magic Quadrant for x86 Server Virtualization Infrastructure" by Thomas J. Bittman, George J. Weiss, Mark A. Margevicius, Philip Dawson, June 11, 2012



Business Critical Apps are now virtualized



What if...



*The same principles that transformed
a single layer of the data center...*

Abstract.

Pool.

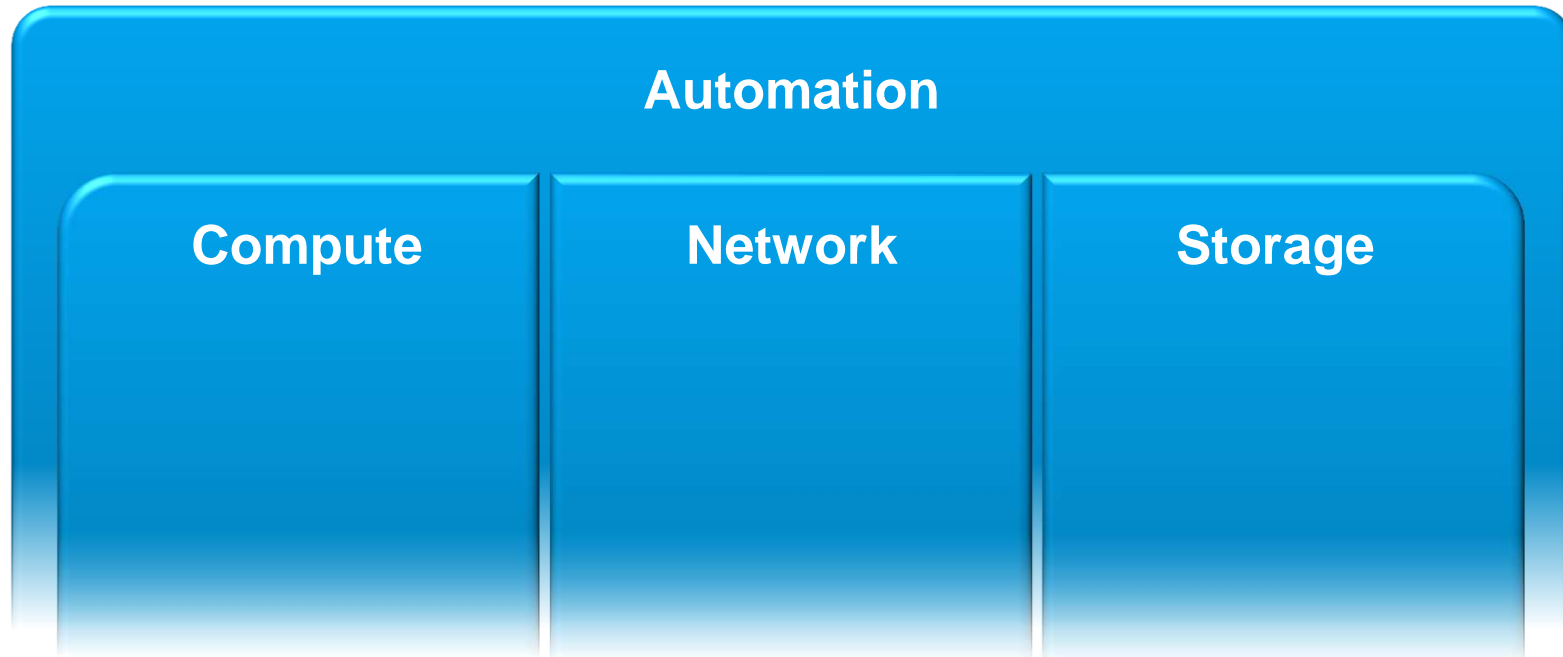
Automate.

*were applied to
the entire data center?*



VMware's SDDC Architecture

Software-Defined Data Center

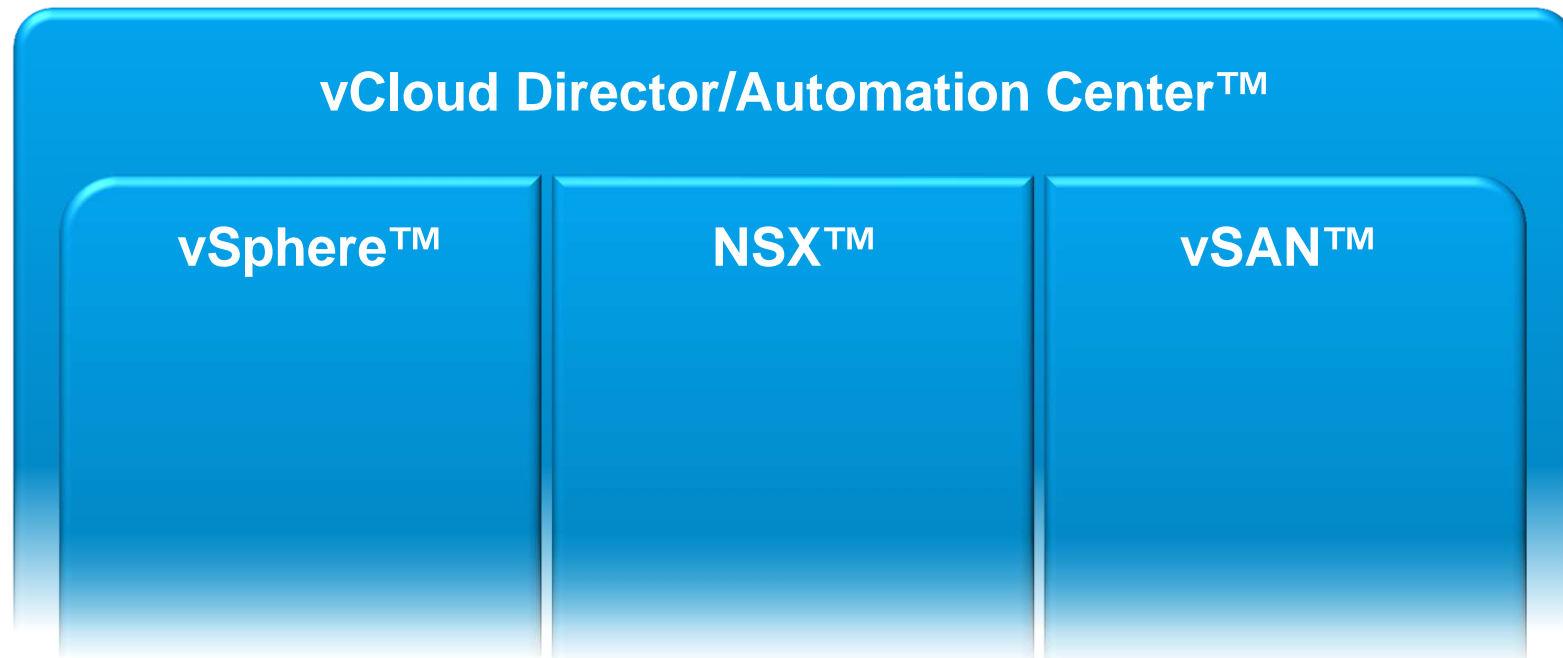


Abstract. Pool. Automate.



VMware's SDDC Components

Software-Defined Data Center



Abstract. Pool. Automate.



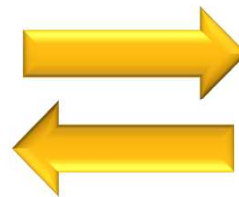
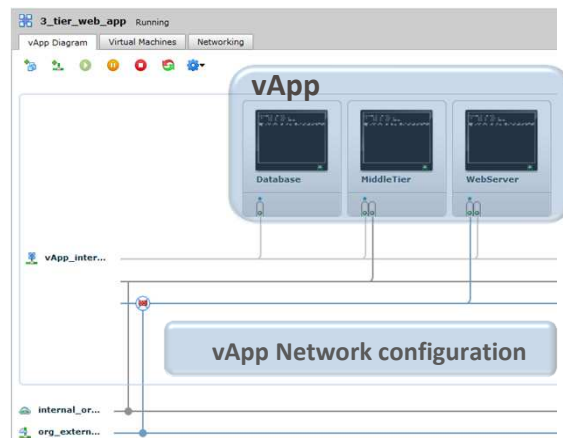
Ability to protect the Software Defined Data Center NetBackup for vCloud Director

WHAT IT DOES:

- Automatically protects newly provisioned VMs (vApps)
- Restores configuration – or metadata – which includes networking and storage layers in addition to the VMs

THE BENEFIT:

- Completely scalable protection for the Software Defined Data Center
- Direct integration with vCloud Director Backup API ensures successful vApp restores
- Datacenter portability by recovering to another vCloud



**The vCloud Director integration in NetBackup 7.6
release is being stress tested in**

**ONE OF THE LARGEST CLOUD
DEPLOYMENTS IN THE WORLD**

Symantec's Software-Defined Data Center


Powered by VMware vCloud Suite

35,000 VIRTUAL MACHINES
13,000 OF WHICH ARE RUNNING AT
ANY GIVEN TIME...



What else...

Decrease Time to provision reduce human error Oracle Intelligent Policies



Oracle based Schedules	<ul style="list-style-type: none">• Full• Incremental• Archive Logs
Object based protection	<ul style="list-style-type: none">• Instance base• All databases• Tablespace
Oracle Attributes	<ul style="list-style-type: none">• Compression• Channels• Stream

WHAT IT DOES:

- Discovers new Oracle instances and deploys backup policies to them
- Automatically generates scripts without use of RMAN
- Allows for scheduling of tasks (i.e. when to backup the DB, archive logs, etc.)

THE BENEFIT:

- Automated protection means less manual overhead to manage/protect Oracle
- Simplify Oracle backup management

NetBackup Deduplication Improvements

WHAT'S INCLUDED:

- Self-healing architecture
- Better housekeeping abilities
- Performance Improvements

THE BENEFIT:

- Faster, more resource-efficient, and more reliable deduplication performance

43% FASTER PEAK CLIENT DEDUPE PERFORMANCE
122% FASTER PEAK TARGET DEDUPLICATION
85% FASTER SINGLE STREAM RESTORE
35% FASTER RESTORE SPEED (4 STREAMS)
101% FASTER RESTORE SPEED (2 STREAMS)

Deduplication improved for the Enterprise

New NetBackup Appliance N5230 – 14TB configuration

Simplify the Operating Model

4TB or 14TB 28/38/40/50 TB 52/62/76/86 TB



Five I/O Configurations

4 1GB ETH - 2 10GB ETH
4 1GB ETH - 2 10GB ETH - 2 8GB FC
4 1GB ETH - 4 10GB ETH - 2 8GB FC
4 1GB ETH - 4 10GB ETH - 8 8GB FC
4 1GB ETH - 2 10GB ETH - 10 8GB FC

BETTER BACKUP AS A SERVICE



Better Backup as a Service NetBackup and Biomni Integration

Simplify the
Operating Model



Service Provider



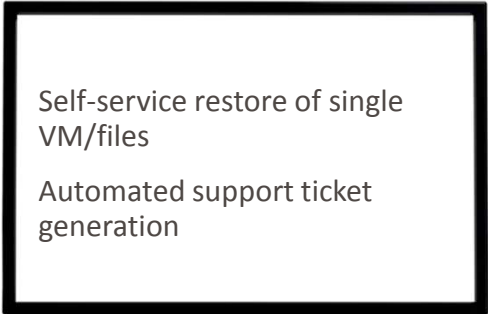
Build service on the
appliance form-factor

DATA PROTECTION:

- GOLD
- SILVER
- BRONZE

**Biomni Front Office
Web Portal**

CUSTOMER



Local appliance for fast
recovery



NETBACKUP 7.6

DEMO



NETBACKUP 7.6

Accelerator for VMware



Activity Monitor - nb-master.lab.pvt - NetBackup Administration Console

10.148.100.152

File Edit View Actions Help

nb-master.lab.pvt

nb-master.lab.pvt (Master Server)

- Activity Monitor
- NetBackup Management
 - Reports
 - Policies
 - Summary of all Policies
 - NetBackup_Catalog
 - VMware_VMs
 - VMware_VMs_Accelerator
- Storage
 - Catalog
 - Host Properties
 - Applications
 - Media and Device Management
 - Device Monitor
 - Media
 - Devices
 - Credentials
 - Disk Array Hosts
 - NDMP Hosts
 - Storage Servers
 - Virtual Machine Servers
- Vault Management
- Access Management
- Users
- NBU User Groups
- Bare Metal Restore Management
- Logging Assistant

nb-master.lab.pvt : Topology

nb-master.lab.pvt

nb-msdp.lab.pvt

nb-master.lab.pvt

nb-msdp.lab.pvt

nb-master.lab.pvt: 3 Jobs (0 Queued 0 Active 0 Waiting for Retry 0 Suspended 0 Incomplete 3 Done)

Job ID	Type	Job State	State De...	Status	Elapsed Time	Job Policy	Job Sche...	Client	Media S...	Start Time	Storage ...	End Time	Attempt	Operation
149	Backup	Done	Done	0	0:13:33	VMware_VMs ...	VMware_...	winsvr-02...	nb-msdp.l...	2/5/2014 ...	MSDP_NB...	2/5/2014 ...	1	
148	Snapshot	Done	Done	0	0:16:35	VMware_VMs ...	VMware_...	winsvr-02...	nb-msdp.l...	2/5/2014 ...	MSDP_NB...	2/5/2014 ...	1	

Jobs Services Processes Drives

Master Server: nb-master.lab.pvt Connected

95%

11:59 AM 2/5/2014



NETBACKUP 7.6

VMware Instant Recovery

Activity Monitor - nb-master
File Edit View Actions Help

VCENTER.lab.pvt - vSphere Client
10.148.100.152
File Edit View Inventory Administration Plug-ins Help

WINSVR-02
Summary Resource Allocation Performance Tasks & Events Alarms Console Storage Views Symantec

General
 Guest OS: Microsoft Windows Server 2008 R2 (64-bit)
 VM Version: 8
 CPU: 2 vCPU
 Memory: 2048 MB
 Memory Overhead: 37.70 MB
 VMware Tools: Running (Current)
 IP Addresses: 192.168.2.42
 DNS Name: WINSVR-02.lab.pvt
 EVC Mode: N/A
 State: Powered On
 Host: esxi-02.lab.pvt
 Active Tasks:
 vSphere HA Protection: N/A

Resources
 Consumed Host CPU: 108 MHz
 Consumed Host Memory: 2030.00 ME
 Active Guest Memory: 963.00 ME
 Refresh Storage Usage
 Provisioned Storage: 66.11 GE
 Not-shared Storage: 18.56 GE
 Used Storage: 18.56 GE

Storage
 ESXi-02_Datastore: Normal
 TUS_DataStorm: Normal
 Drive Type: Non-SSD
 Unknown

Network
 VM Network: Standard port group

Commands
 Shut Down Guest
 Suspend
 Restart Guest
 Edit Settings

Recent Tasks
 Name Target Status
 Remove snapshot WINSVR-02 Completed
 Create virtual machine ... WINSVR-02 Completed

VM Storage Profiles
 VM Storage Profiles:
 Profiles Compliance:

Recent Tasks
 Name Target Status Requested Start Time Start Time
 vCenter Server
 WINSVR-02 WINSVR-02 Completed 2/5/2014 12:11:23 PM 2/5/2014 12:11:23 PM
 Remove snapshot WINSVR-02 Completed 2/5/2014 12:07:29 PM 2/5/2014 12:07:29 PM
 Create virtual machine ... WINSVR-02 Completed 2/5/2014 12:07:29 PM 2/5/2014 12:07:29 PM

Inventory
 Home Inventory Hosts and Clusters
 VCENTER.lab.pvt
 LAB
 esxi-01.lab.pvt
 LNXSVR-01
 LNXSVR-03
 NBvcPlugin
 WINSVR-01
 esxi-02.lab.pvt
 LNXSVR-04
 WINSVR-02

Activity Monitor - nb-master
 nb-master.lab.pvt
 Activity Monitor
 NetBackup Management
 Reports
 Policies
 Summary of all Policies:
 NetBackup_Catalog
 VMware_VMs
 VMware_VMs_Acceler
 Storage
 Catalog
 Host Properties
 Applications
 Media and Device Manager
 Device Monitor
 Media
 Devices
 Credentials
 Vault Management
 Access Management
 Bare Metal Restore Management
 Logging Assistant

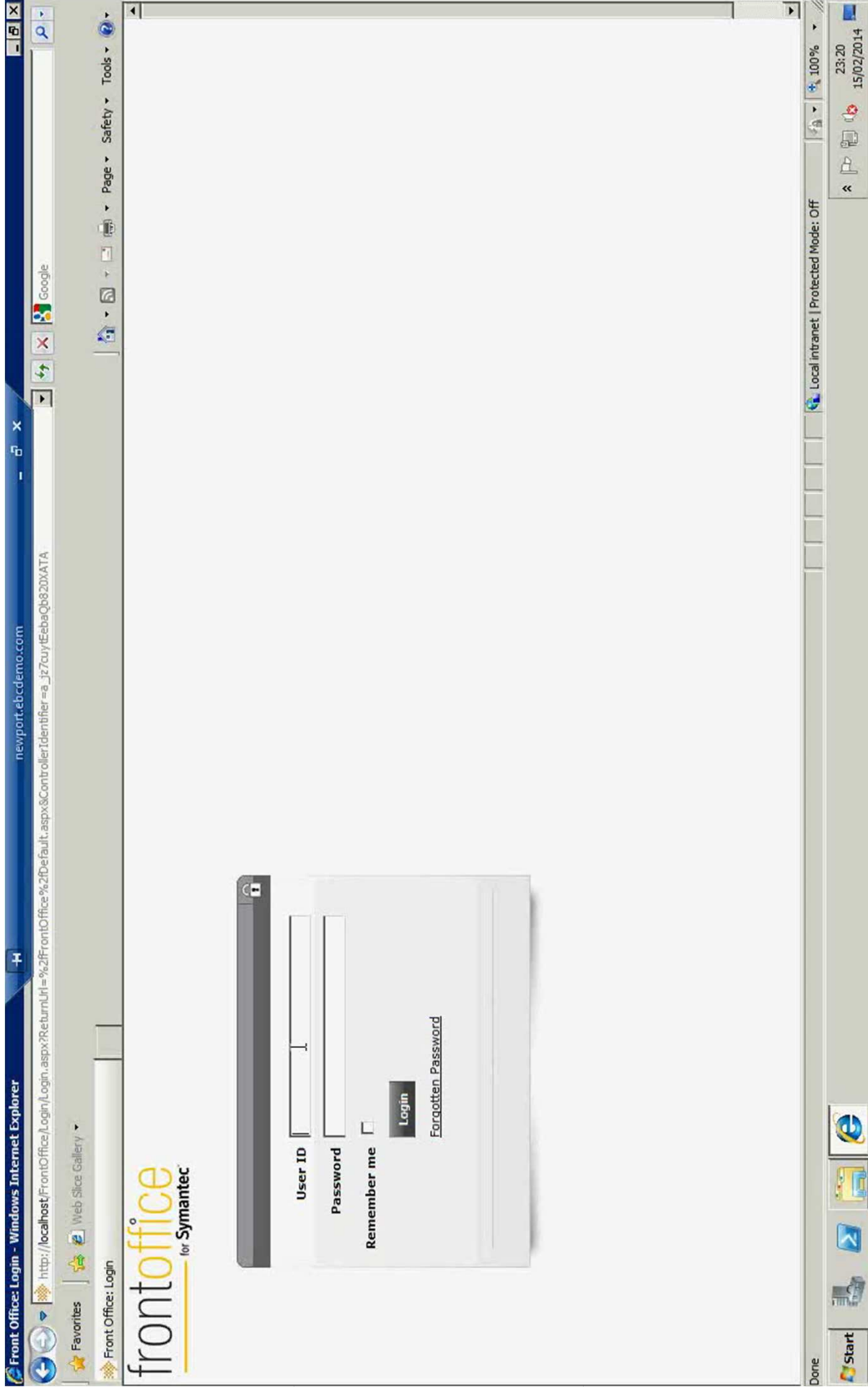
Taskbar
 Computer
 Recycle Bin
 NetBackup Administration
 vSphere Client
 PUTTY
 vApp_Readme
 VMIR
 Start

System Tray
 Tasks Alarms
 12:13 PM 2/5/2014

NETBACKUP 7.6

Biomni Integration





NETBACKUP 7.6

Oracle Intelligent Policies

10.149.4.120

Policies - nbmaster1 - NetBackup Administration Console

File Edit View Actions Help

nbmaster1 (Master Server)

- Activity Monitor
- NetBackup Management
 - Reports
 - Policies
 - Summary of all Policies
 - NB_CAT
 - NEW_ORA_POLICY**
 - ORACLE_SAMPLE
 - Storage
 - Catalog
 - Host Properties
 - Applications
 - Oracle
 - All Instances
 - Instance Groups
 - Media and Device Management
 - Media
 - Devices
 - Credentials
 - Vault Management
 - Access Management
 - Bare Metal Restore Management
 - Logging Assistant

NEW_ORA_POLICY: Attributes

Name	Type	Da...	Type	St...	Vol...	Ch...	Eff...	Co...	D, Sn...	M...	En...	V...	Ex...	Pr...
NEW_ORA_POLICY	Oracle STU...	---	---	Net...	---	---	1, 1/3...	---	---	---	---	---	---	---

NEW_ORA_POLICY: 1 Schedules

Name	Type	Retention	Frequen...	M. Storage	Volume Pool	F...	Sta...	S...	A...	D...	Ind...	Media Owner
Full	Full Backup	infinity	1 Week 1	---	---	---	---	---	---	No	---	---

NEW_ORA_POLICY: 1 Instances

Instance Name (Oracle_SID)	State	Host	OS Type	Instance Group	Registered
orcl	Active	dbclient1	Unix	/u01/app/oracle/produ...	1/3/2014 ...

NEW_ORA_POLICY: 0 Selections

Backup Selections

Master Server: nbmaster1 Connected

95% 2:27 PM 2/5/2014



Accelerator
for VMware

1

Instant Recovery
for VMware

2

NetBackup for
vCloud Director

3

VMware plugin
for vCenter

4

Replication
Director
Improvements

5

NETBACKUP 7.6

Oracle Intelligent
Policies

6

Deduplication
Improvements

7

Targeted AIR

8

SLP Windows

9

OpsCenter
Improvements

10



Thank you!

Copyright © 2012 Symantec Corporation. All rights reserved. Symantec and the Symantec Logo are trademarks or registered trademarks of Symantec Corporation or its affiliates in the U.S. and other countries. Other names may be trademarks of their respective owners.

This document is provided for informational purposes only and is not intended as advertising. All warranties relating to the information in this document, either express or implied, are disclaimed to the maximum extent allowed by law. The information in this document is subject to change without notice.